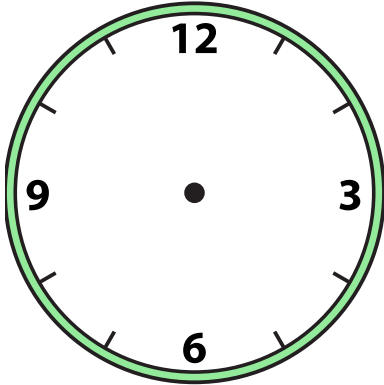


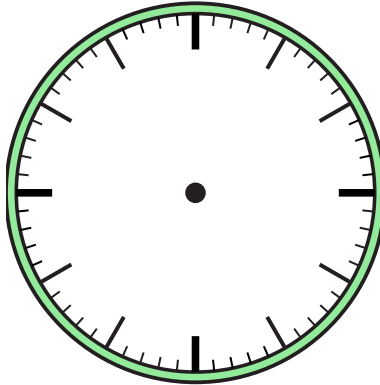


Draw the hour and minute hand on the clock so it represents the time shown.

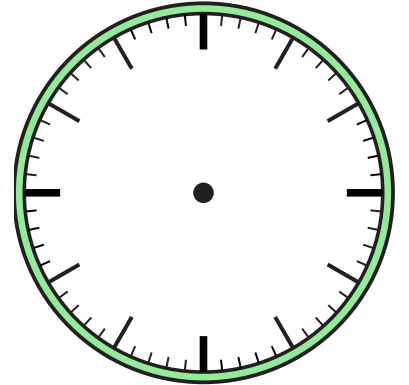
1) 8:30



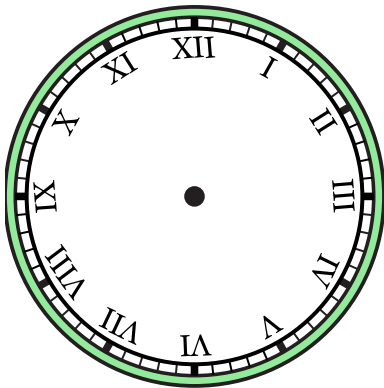
2) 12:00



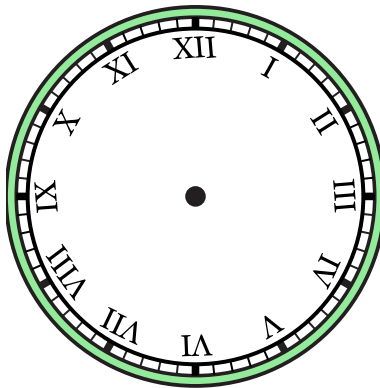
3) 8:00



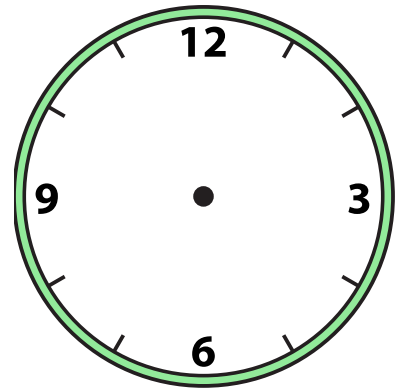
4) 12:00



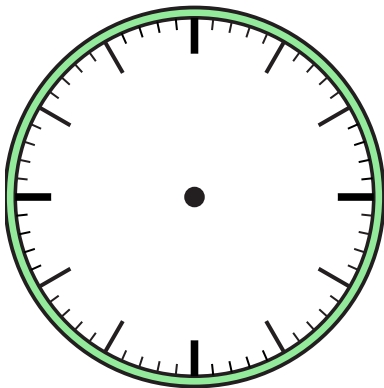
5) 9:00



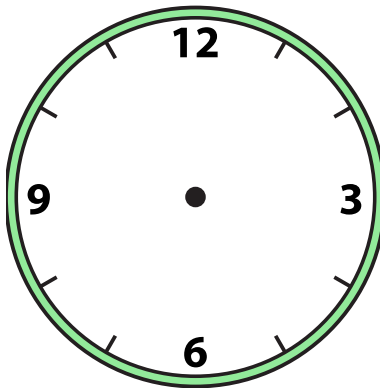
6) 3:30



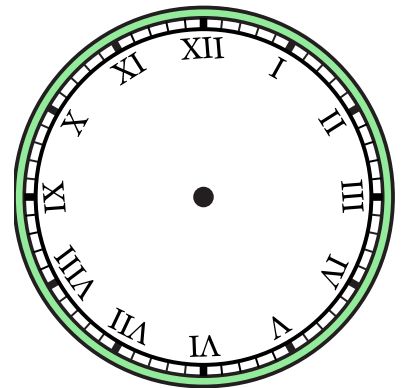
7) 4:30



8) 12:30



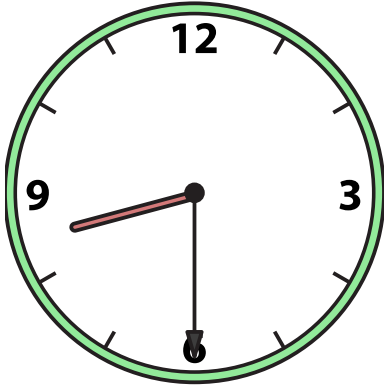
9) 7:00



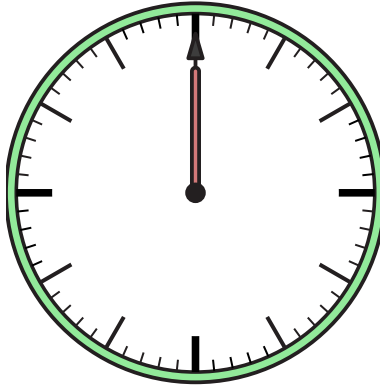


Draw the hour and minute hand on the clock so it represents the time shown.

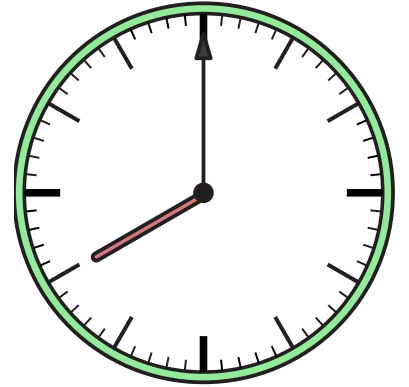
1) 8:30



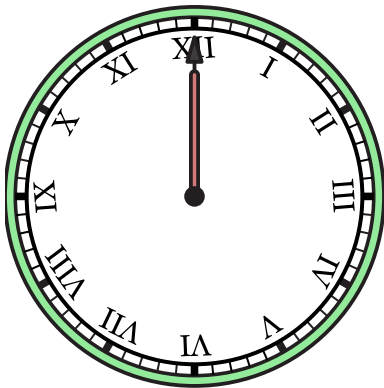
2) 12:00



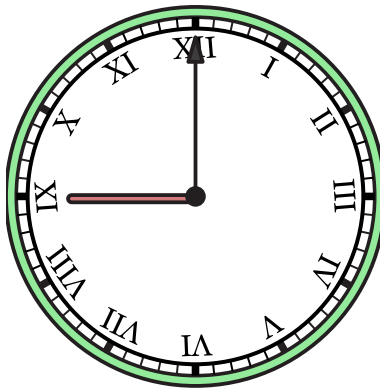
3) 8:00



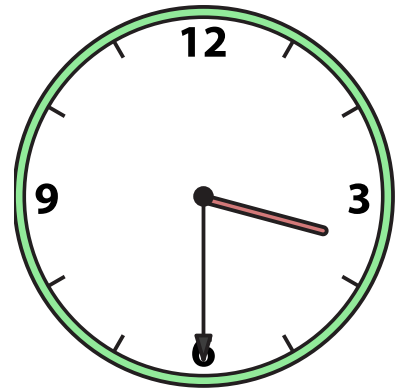
4) 12:00



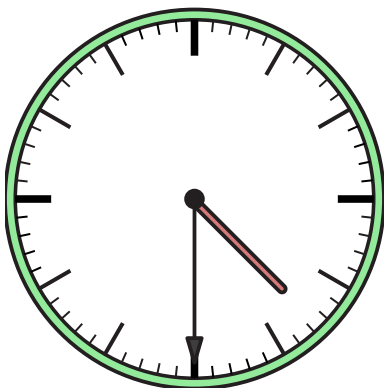
5) 9:00



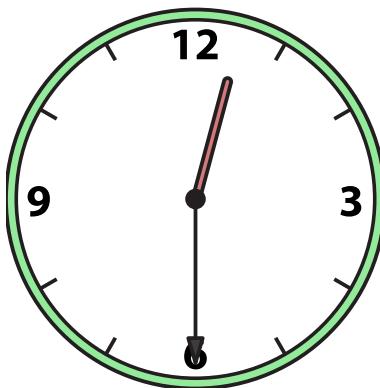
6) 3:30



7) 4:30



8) 12:30



9) 7:00

