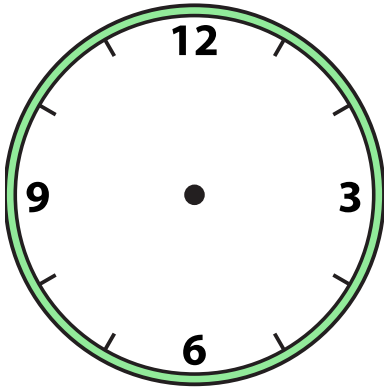


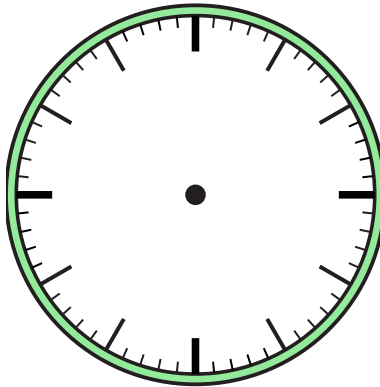


Draw the hour and minute hand on the clock so it represents the time shown.

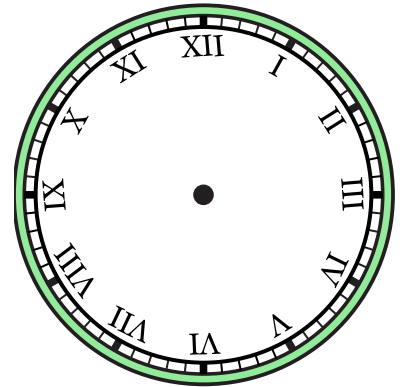
1) 1:30



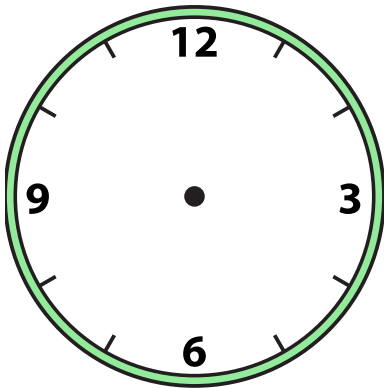
2) 8:00



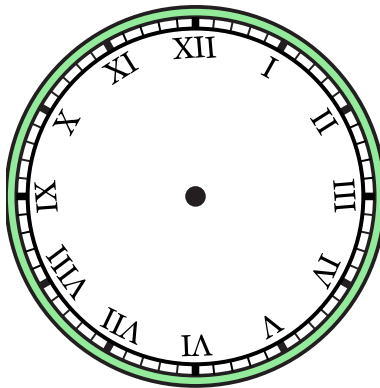
3) 1:00



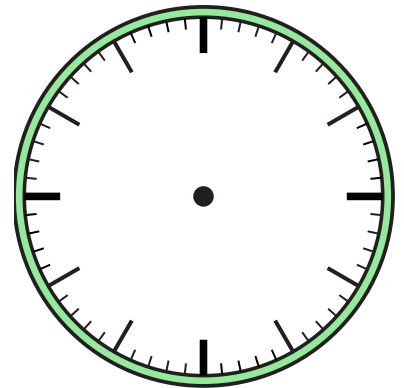
4) 12:30



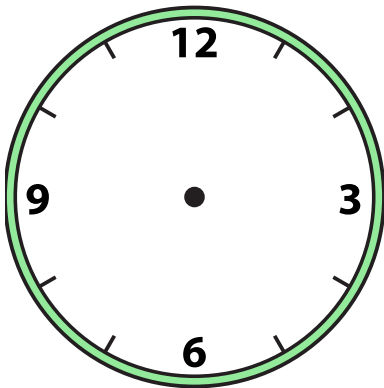
5) 4:00



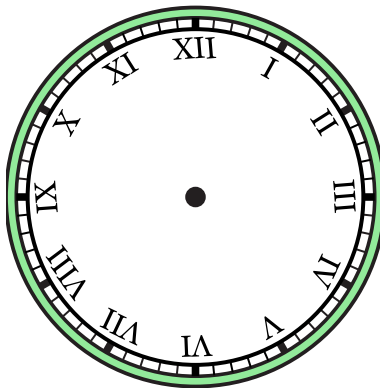
6) 10:00



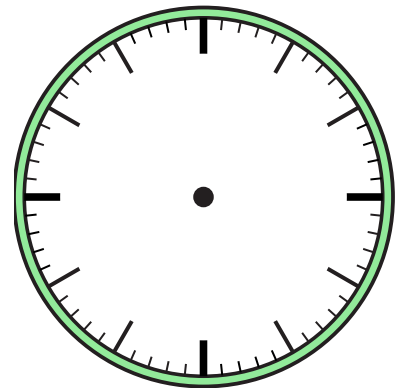
7) 6:30

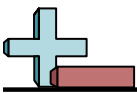


8) 2:30



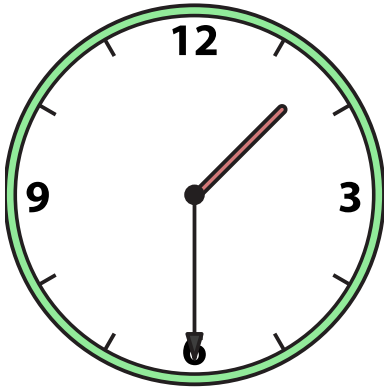
9) 8:30



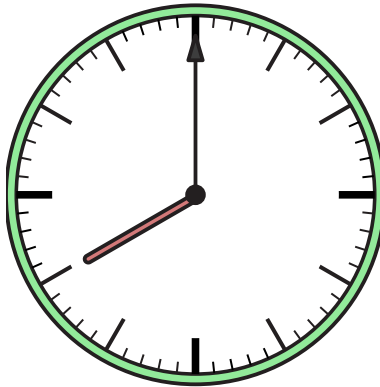


Draw the hour and minute hand on the clock so it represents the time shown.

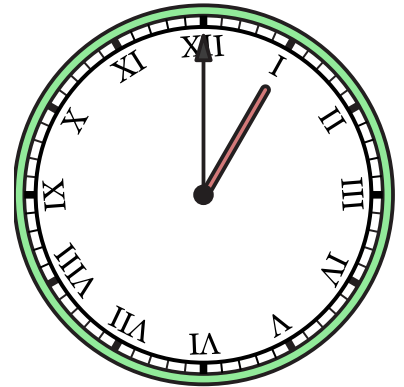
1) 1:30



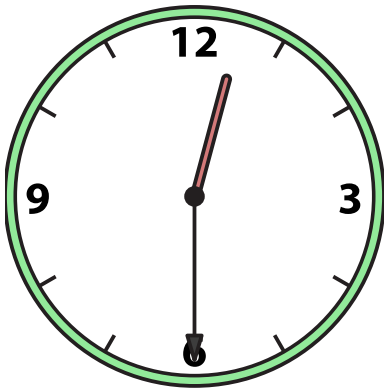
2) 8:00



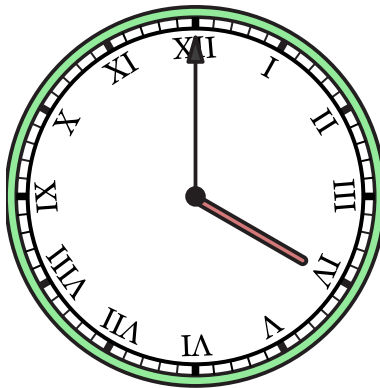
3) 1:00



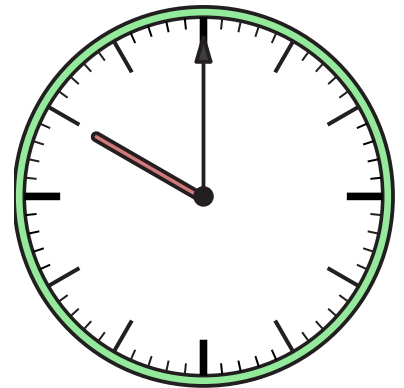
4) 12:30



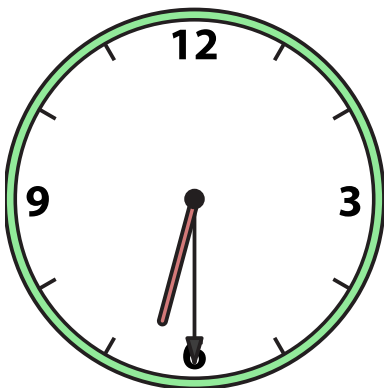
5) 4:00



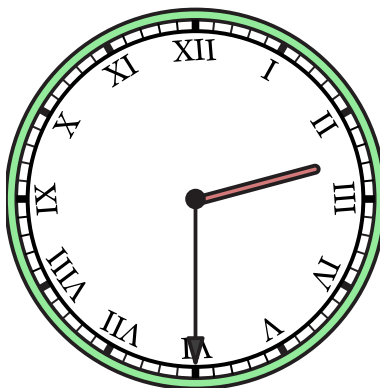
6) 10:00



7) 6:30



8) 2:30



9) 8:30

