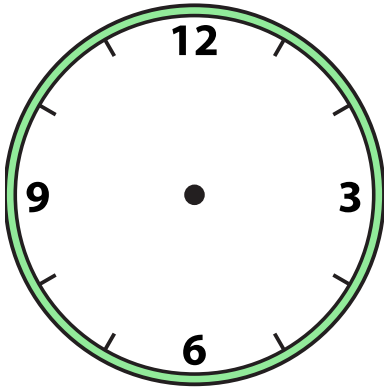


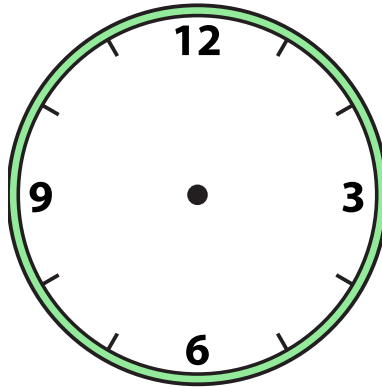


Draw the hour and minute hand on the clock so it represents the time shown.

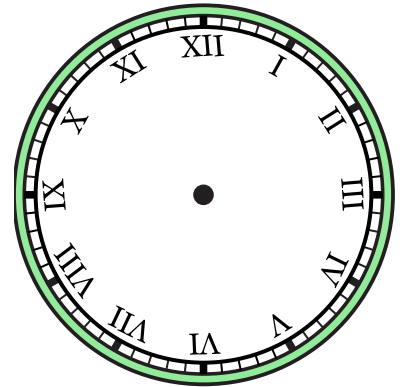
1) 3:00



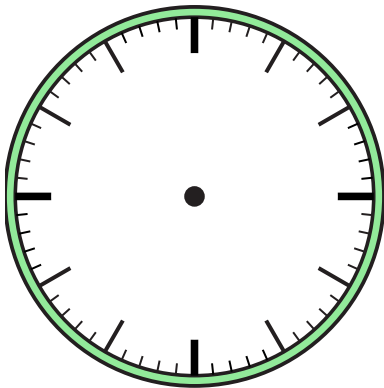
2) 10:00



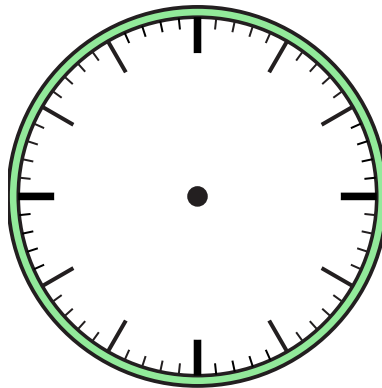
3) 5:30



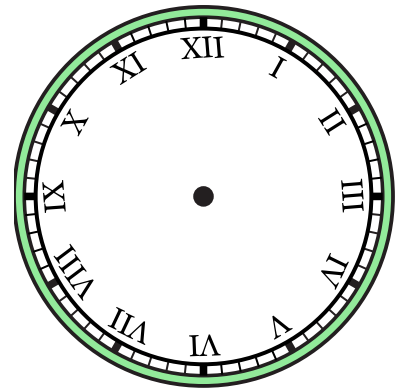
4) 7:30



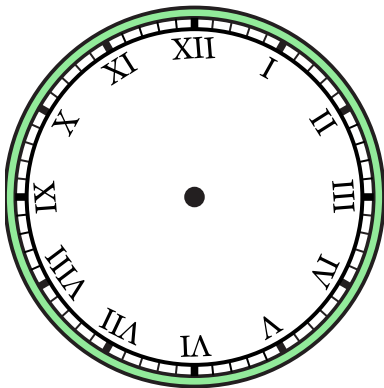
5) 10:30



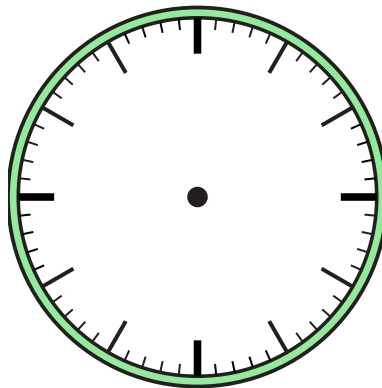
6) 2:00



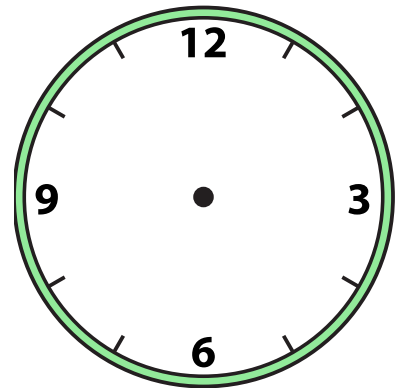
7) 7:00



8) 9:00



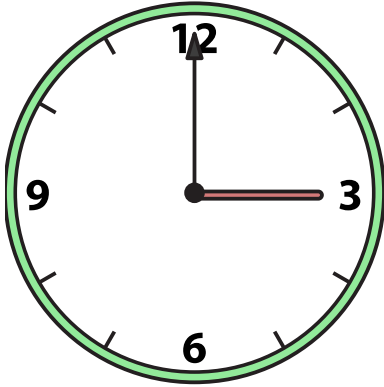
9) 1:00



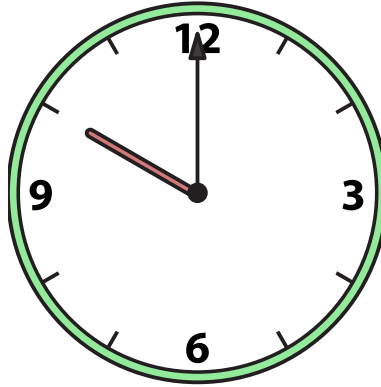


Draw the hour and minute hand on the clock so it represents the time shown.

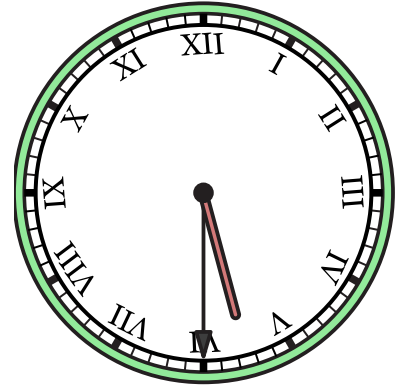
1) 3:00



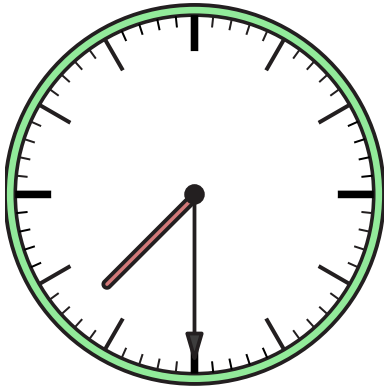
2) 10:00



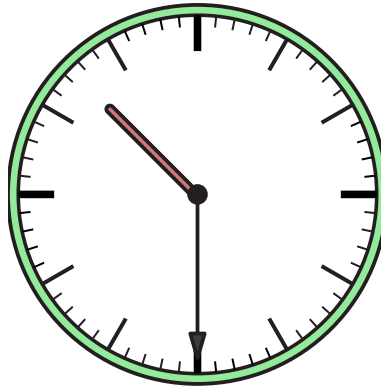
3) 5:30



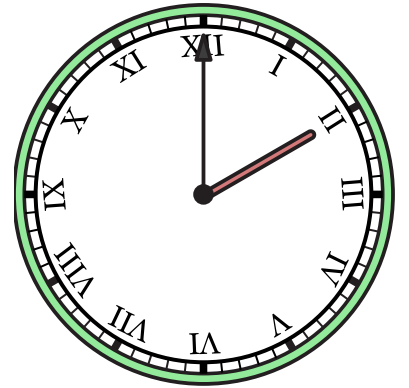
4) 7:30



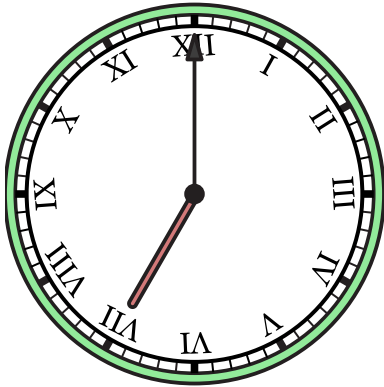
5) 10:30



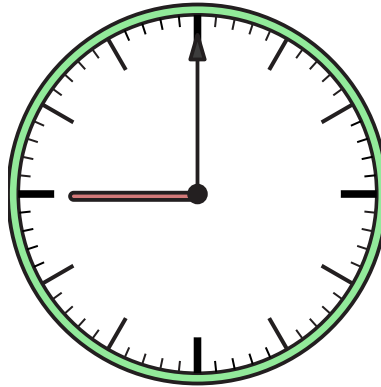
6) 2:00



7) 7:00



8) 9:00



9) 1:00

