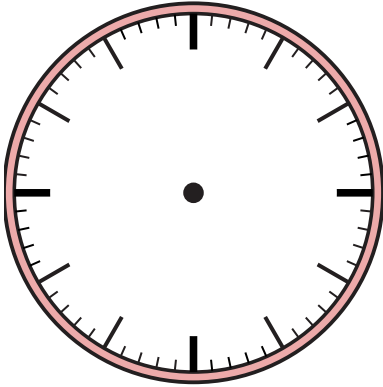


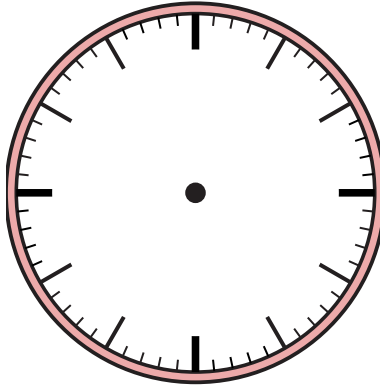


Draw the hour and minute hand on the clock so it represents the time shown.

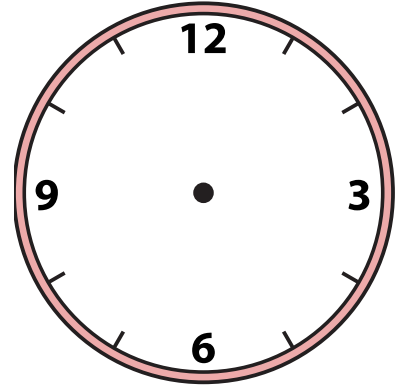
1) 11:55



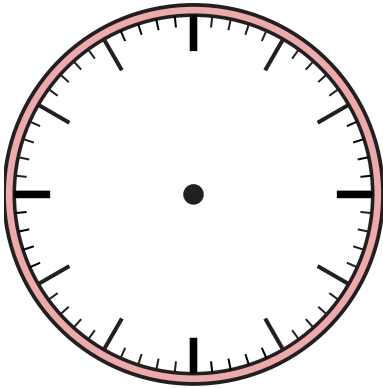
2) 7:15



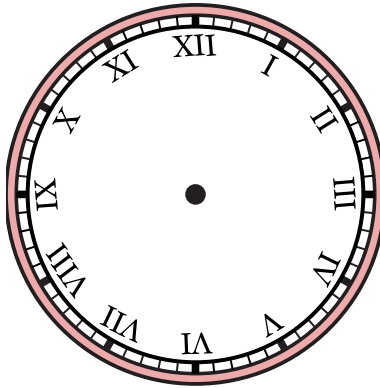
3) 8:15



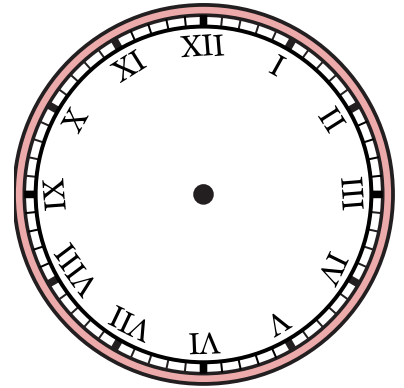
4) 10:17



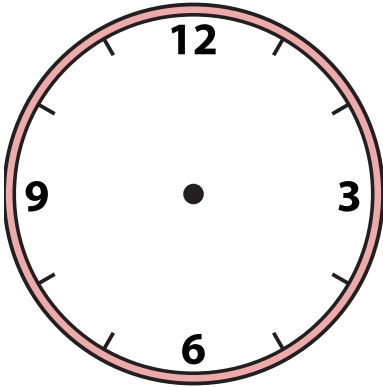
5) 8:29



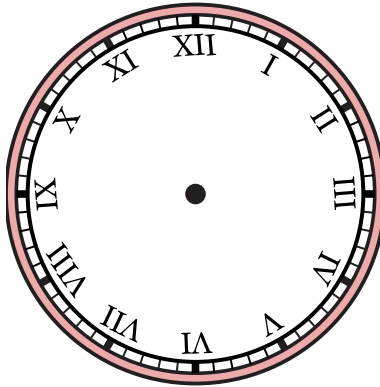
6) 2:09



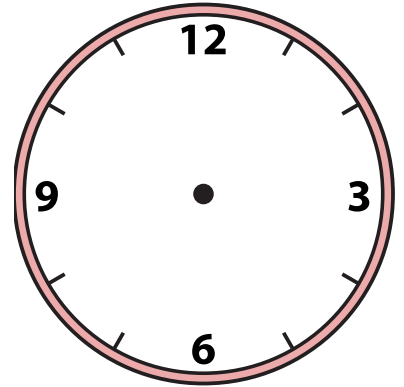
7) 12:43

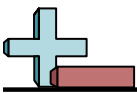


8) 12:32



9) 12:50



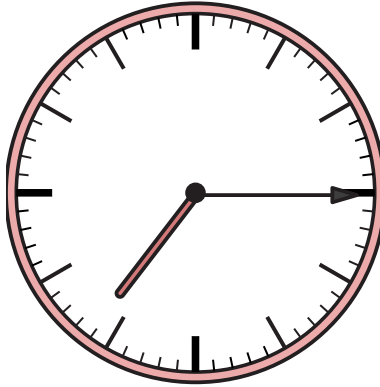


Draw the hour and minute hand on the clock so it represents the time shown.

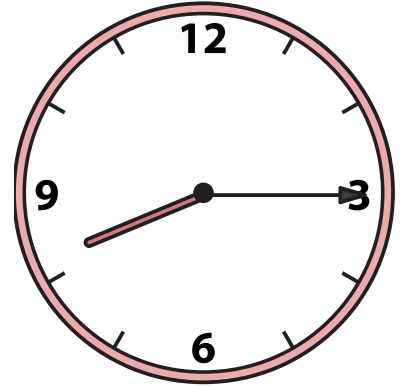
1) 11:55



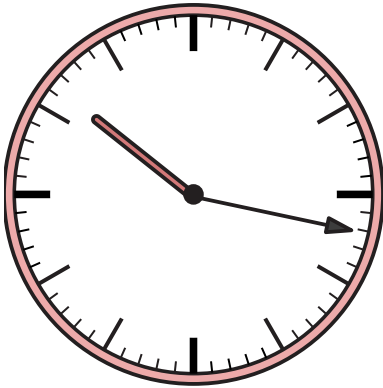
2) 7:15



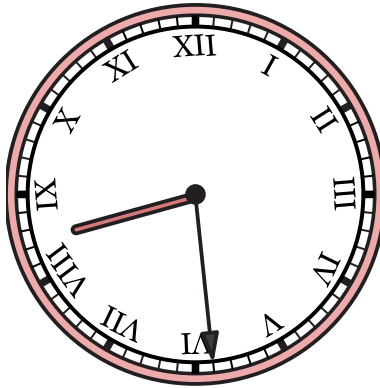
3) 8:15



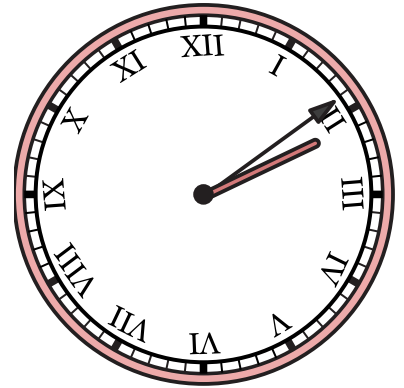
4) 10:17



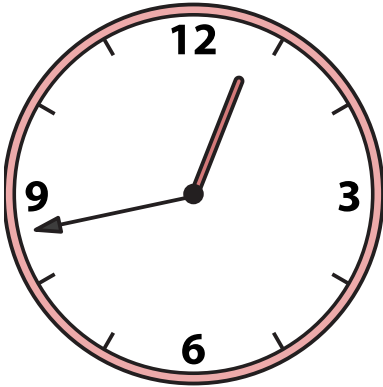
5) 8:29



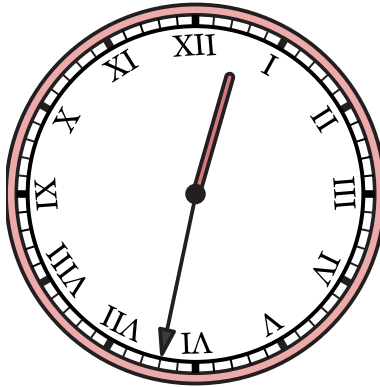
6) 2:09



7) 12:43



8) 12:32



9) 12:50

