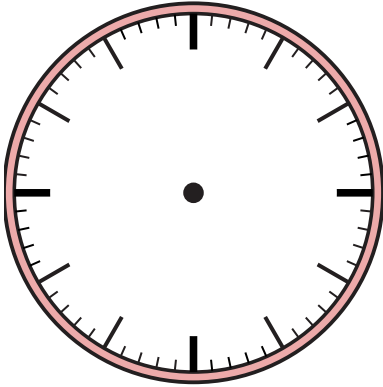


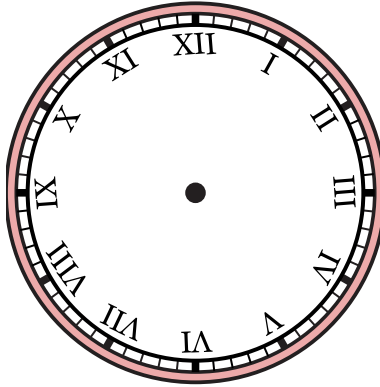


Draw the hour and minute hand on the clock so it represents the time shown.

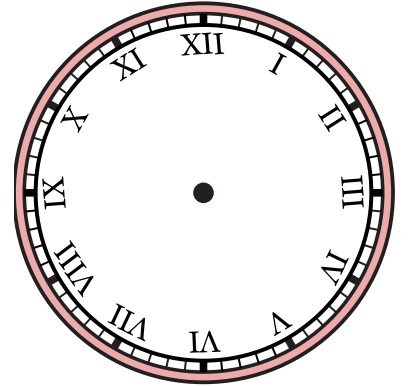
1) 6:08



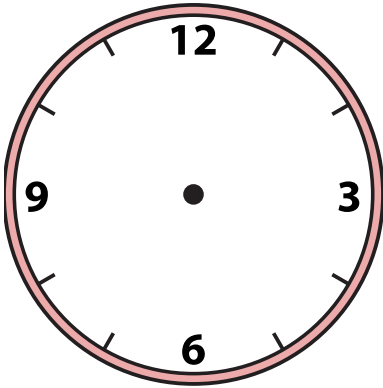
2) 11:41



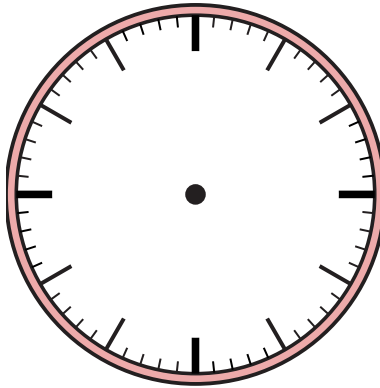
3) 12:25



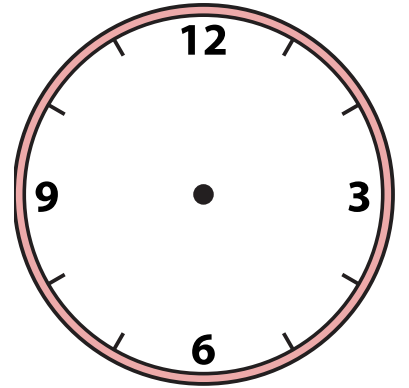
4) 9:18



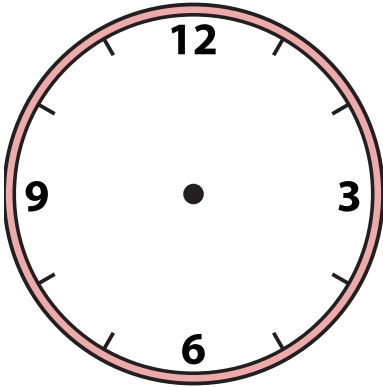
5) 12:04



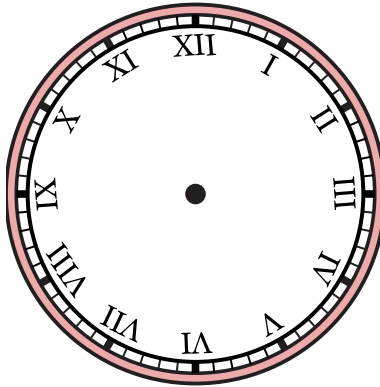
6) 6:06



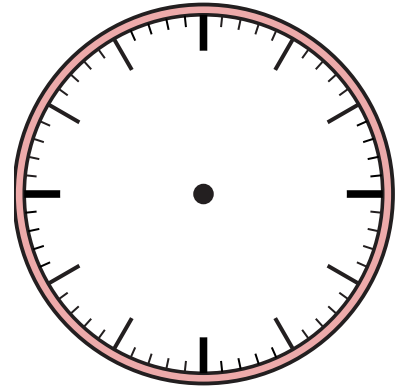
7) 10:30



8) 3:05



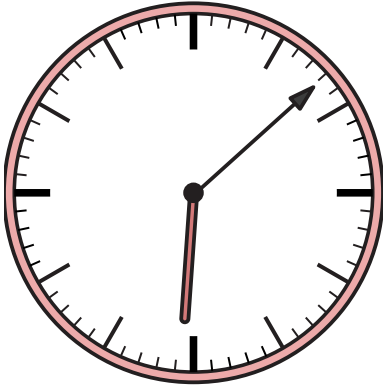
9) 11:15



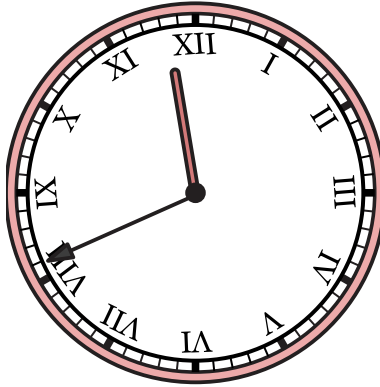


Draw the hour and minute hand on the clock so it represents the time shown.

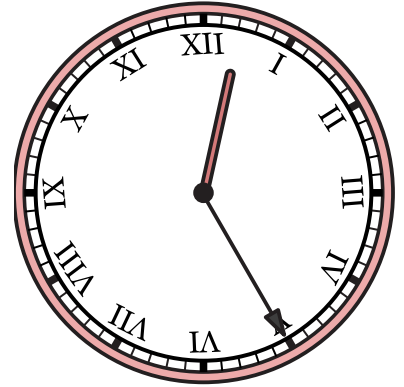
1) 6:08



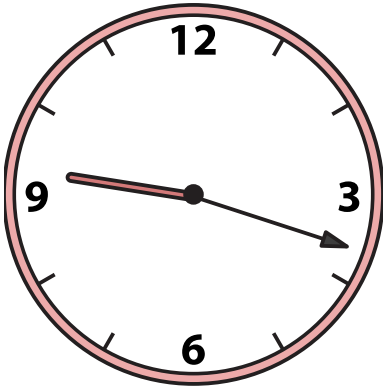
2) 11:41



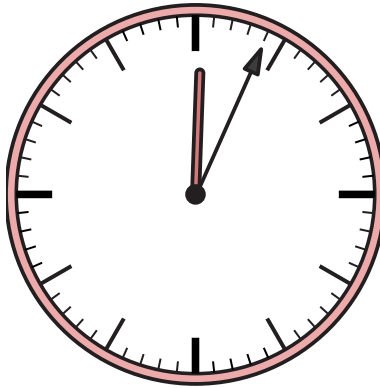
3) 12:25



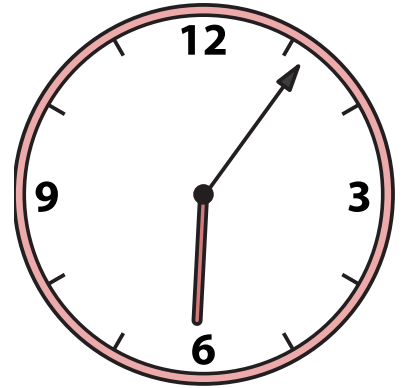
4) 9:18



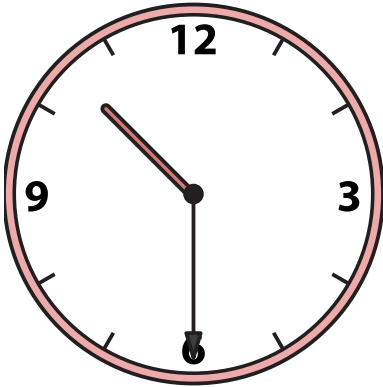
5) 12:04



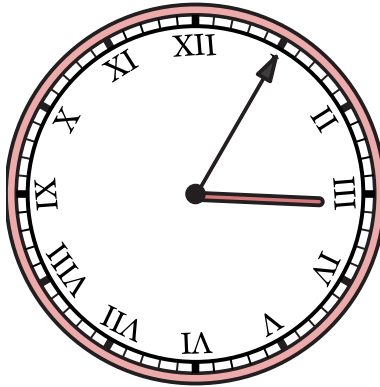
6) 6:06



7) 10:30



8) 3:05



9) 11:15

