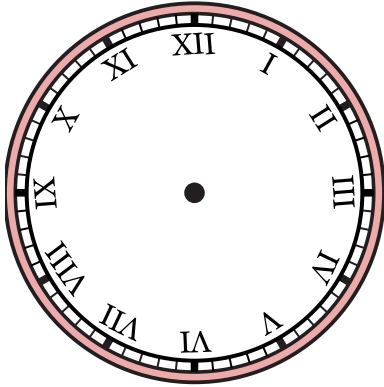


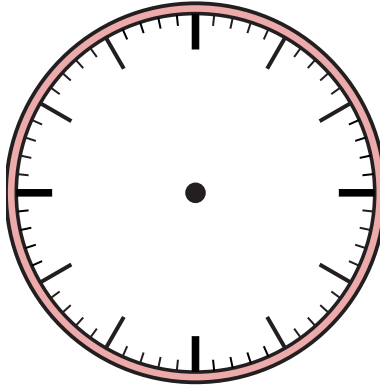


Draw the hour and minute hand on the clock so it represents the time shown.

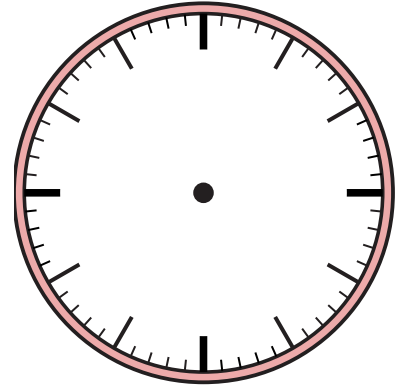
1) 4:29



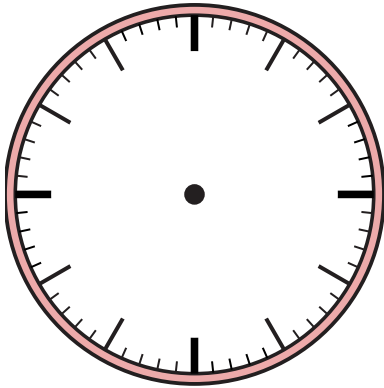
2) 8:53



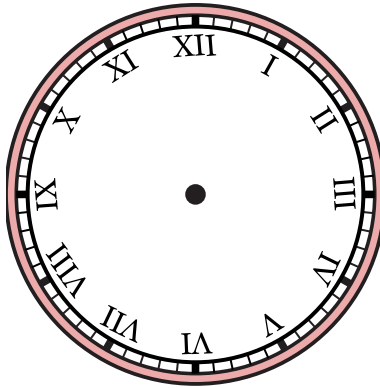
3) 2:19



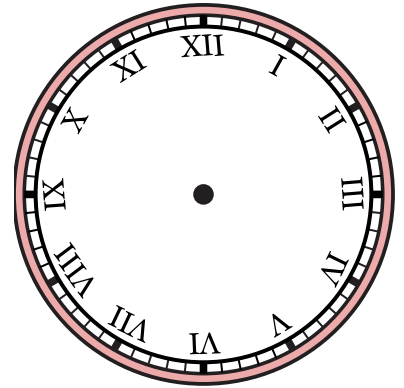
4) 2:57



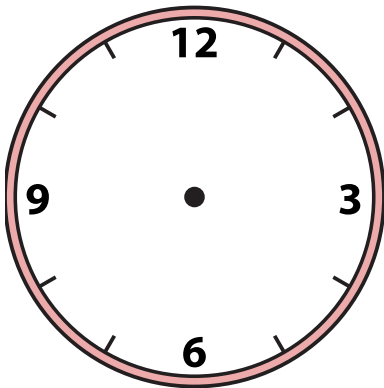
5) 12:54



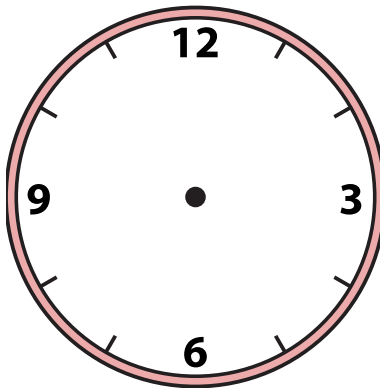
6) 11:00



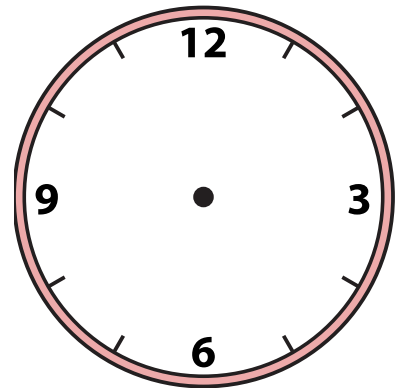
7) 5:04



8) 8:43



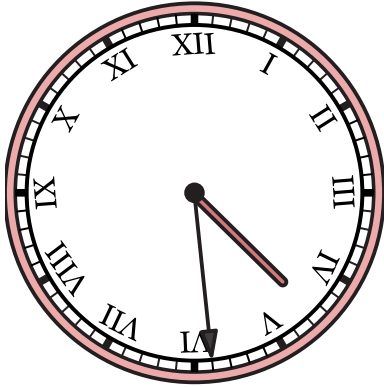
9) 9:10



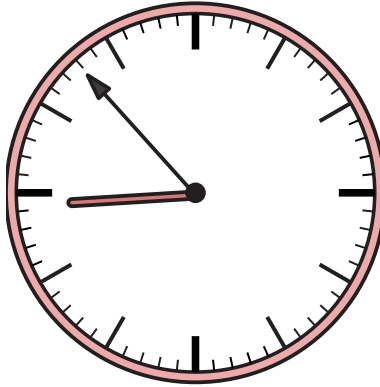


Draw the hour and minute hand on the clock so it represents the time shown.

1) 4:29



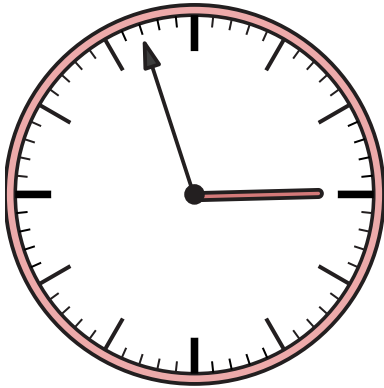
2) 8:53



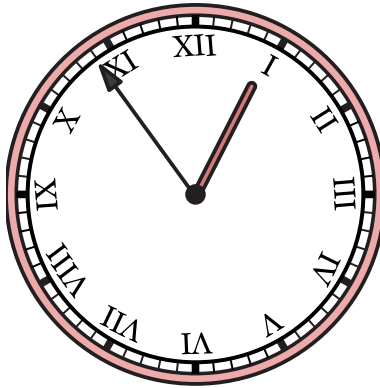
3) 2:19



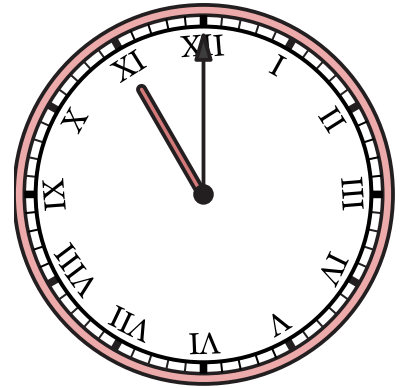
4) 2:57



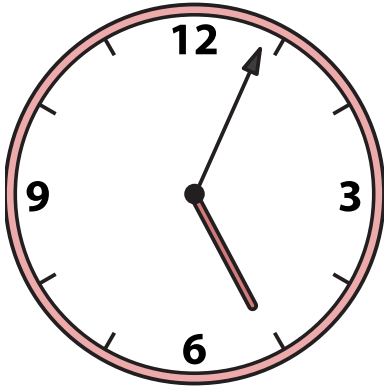
5) 12:54



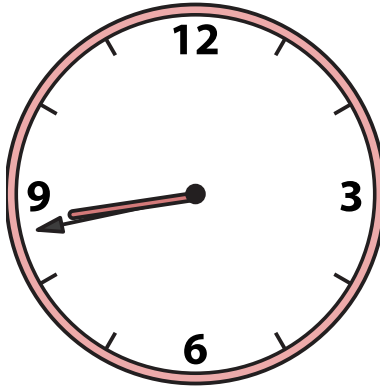
6) 11:00



7) 5:04



8) 8:43



9) 9:10

