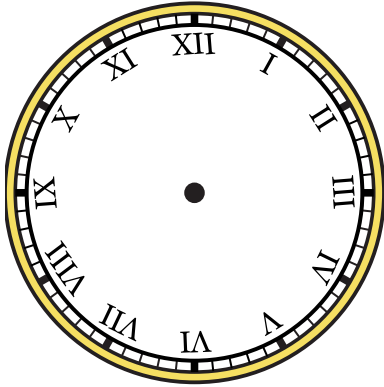


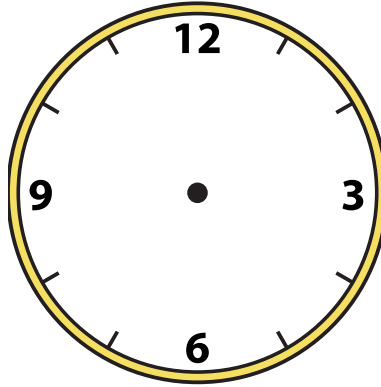


Draw the hour and minute hand on the clock so it represents the time shown.

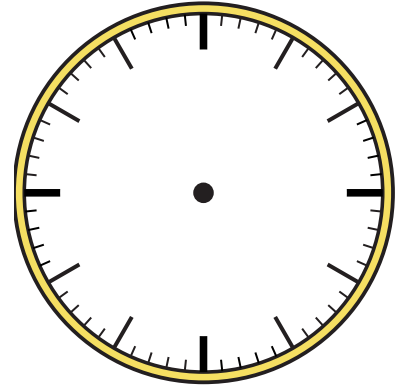
1) 2:55



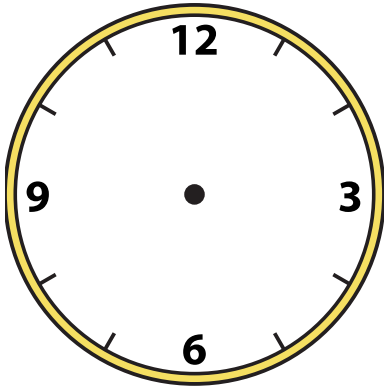
2) 2:20



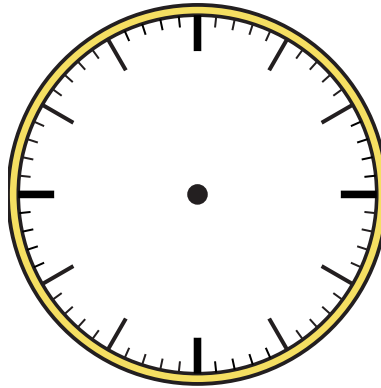
3) 8:00



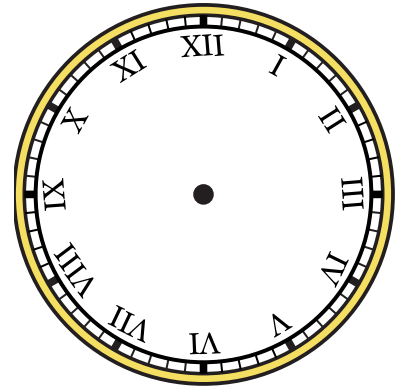
4) 4:25



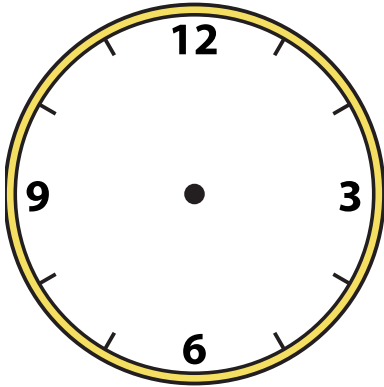
5) 10:50



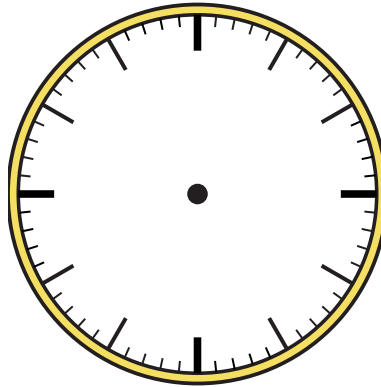
6) 11:20



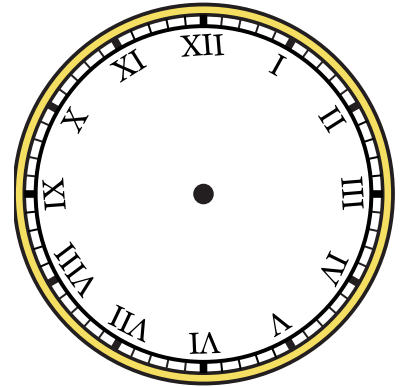
7) 4:20



8) 5:40



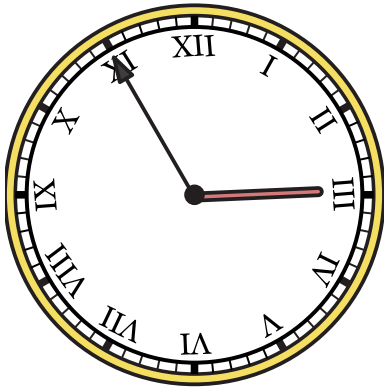
9) 12:25



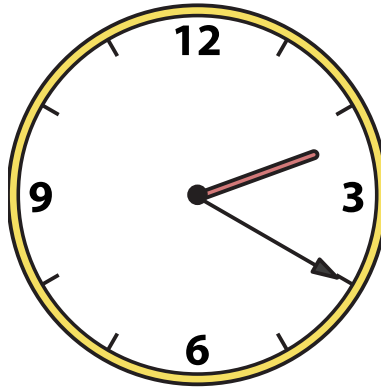


Draw the hour and minute hand on the clock so it represents the time shown.

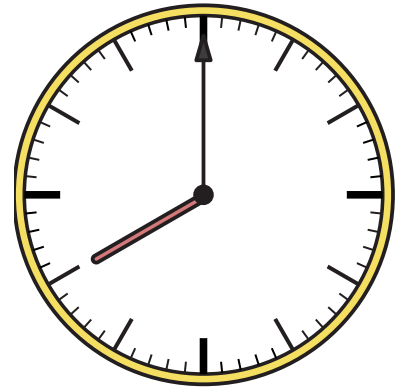
1) 2:55



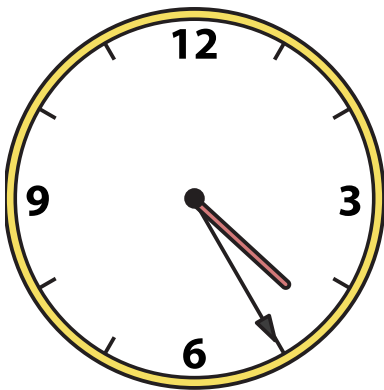
2) 2:20



3) 8:00



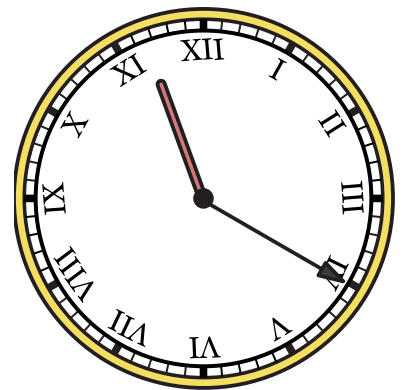
4) 4:25



5) 10:50



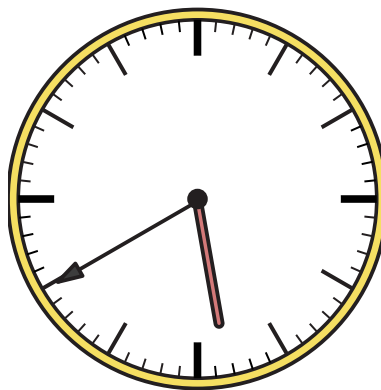
6) 11:20



7) 4:20



8) 5:40



9) 12:25

