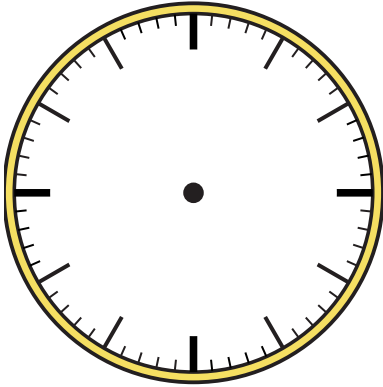


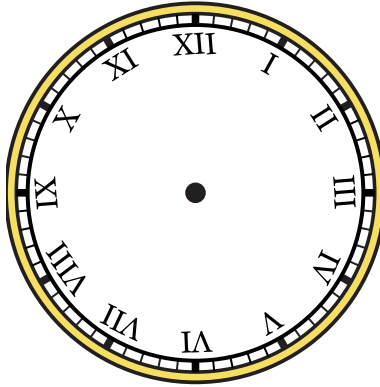


Draw the hour and minute hand on the clock so it represents the time shown.

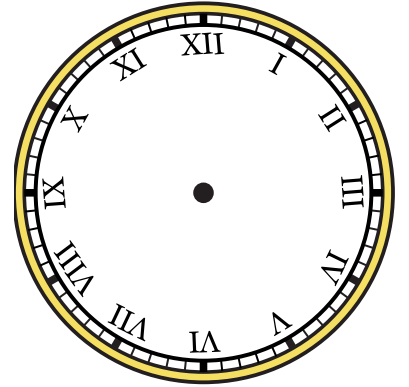
1) 6:05



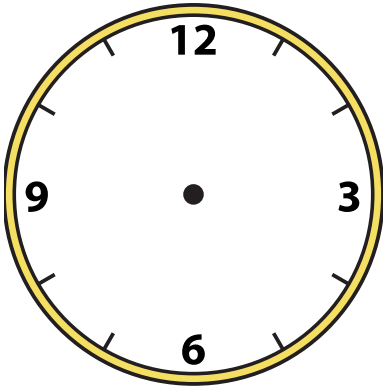
2) 11:40



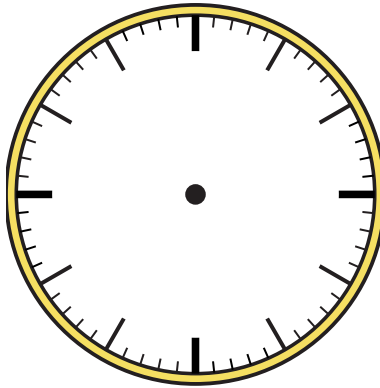
3) 12:25



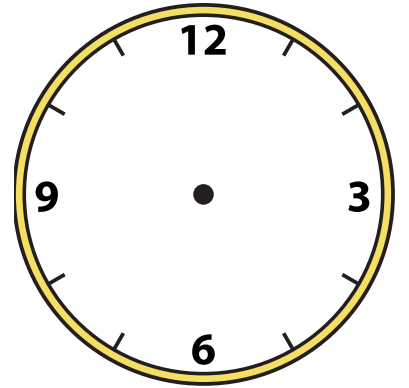
4) 9:15



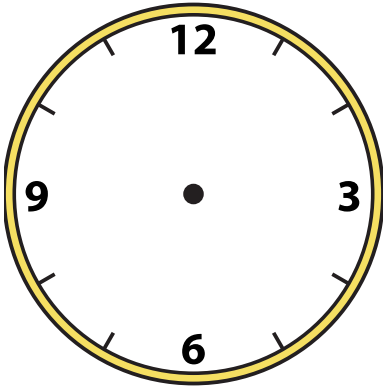
5) 12:00



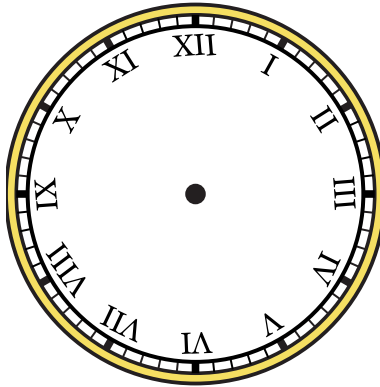
6) 3:55



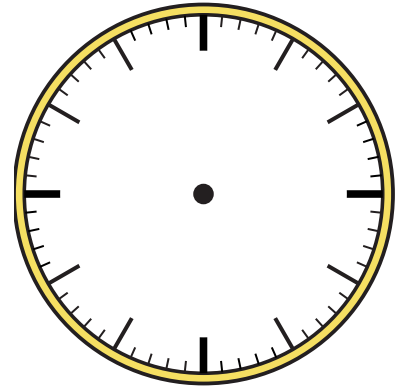
7) 10:30



8) 3:05



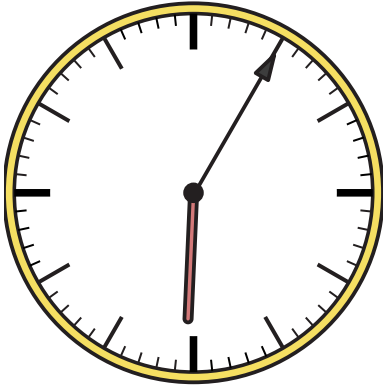
9) 11:15



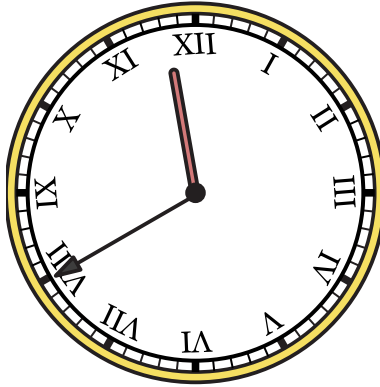


Draw the hour and minute hand on the clock so it represents the time shown.

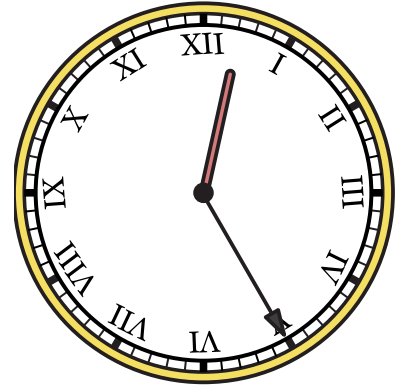
1) 6:05



2) 11:40



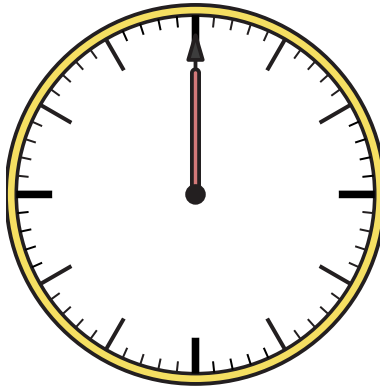
3) 12:25



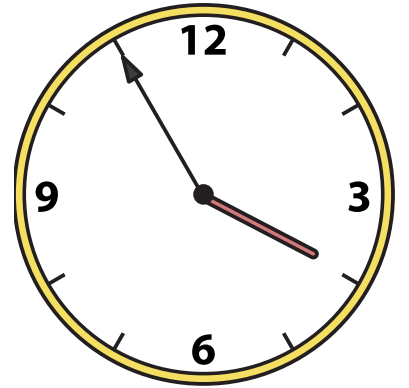
4) 9:15



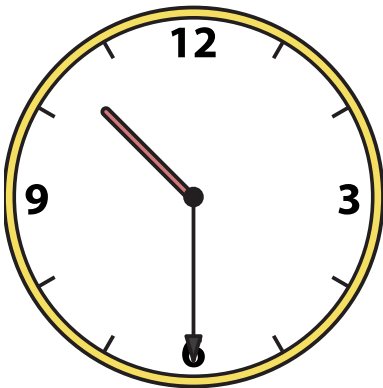
5) 12:00



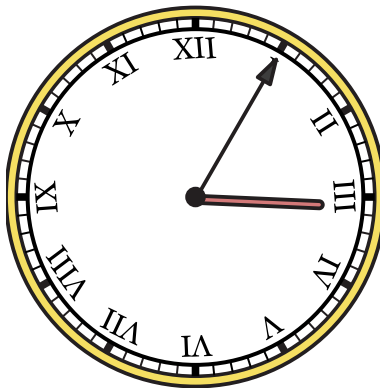
6) 3:55



7) 10:30



8) 3:05



9) 11:15

